



THE UNITED REPUBLIC OF TANZANIA
MINISTRY OF MINERALS



STATE MINING CORPORATION (STAMICO)

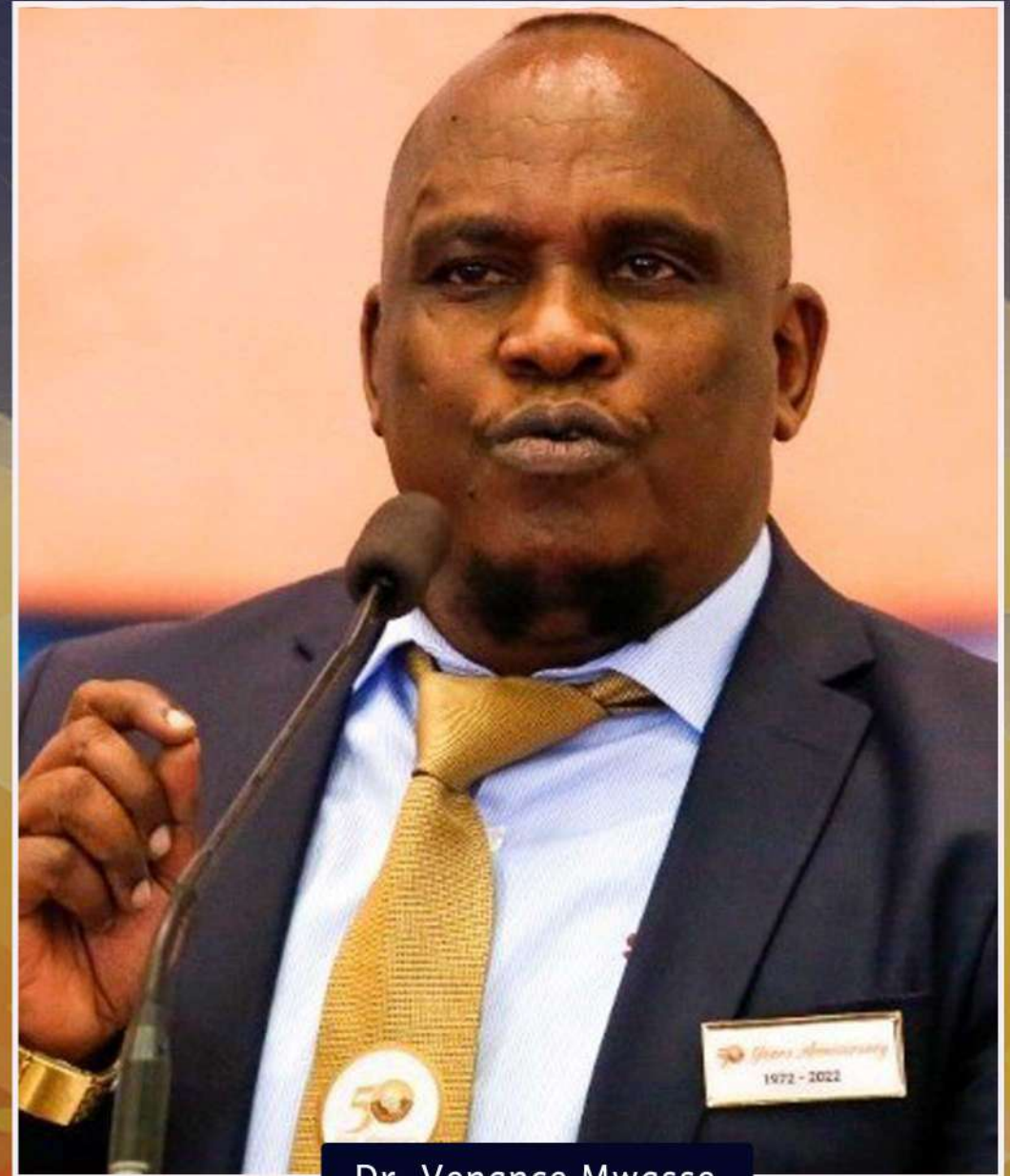
AVAILABLE OPPORTUNITIES AT STAMICO

 TANZANIA, EAST AFRICA



Managing Director'S Message

“Invest strategically,
maximize the benefits of
the mining industry”



Dr. Venance Mwase
Managing Director

3.0 ABOUT US



State Mining Corporation (STAMICO) is a wholly Government owned Corporation, established 1972 so as to participate strategically in investing on exploration and mining projects. It is an institution under the Ministry of Minerals with headquarters offices in Dodoma, the capital city of Tanzania.

We have high quality and reliable team comprise of qualified engineers, geologist, environmental specialists and other supporting professionals to provide geological and Mining consultancy services as well as produce geo-technical report.

We pride ourselves in offering state-of-art drilling services using diamond drilling (DD) rigs, Multi-purpose air rotary rig for reverse circulation (RC) and rotary air blast (RAB). Our ambition is to strive to provide high quality services beyond our customers' expectations while meeting national and international standards.



AVAILABLE INVESTMENT OPPORTUNITIES



4.0 LICENCE FOR JOINT VENTURE DEVELOPMENT

A. CRITICAL MINERALS (LITHIUM, GRAPHITE, REE, NICKEL, COBALT, IRON ORE AND TIN)

LITHIUM – Prospecting license

Dodoma, Central Tanzania

The license is located within the Hombolo-Msagali belt that host lithium bearing pegmatites within the Archean Dodoma rocks, mainly quartz feldspathic gneiss, amphibolitic schists, and quartzites. The belt is intruded by synorogenic granites. A strong structural in-print is present in the metamorphic host rocks trending NW and it appears to control emplacement of the pegmatite dykes. Lithium is known to be found in two minerals that occur within the pegmatites: lepidolite a lithium bearing mica with chemical formula $K(Li,Al)_3(Al,Si,Rb)_4O_{10}(F,OH)$ is a major source of lithium in this areas. Spodumene a lithium aluminum silicate mineral ($LiAlSi_2O_6$) in the pyroxene family, is another important ore of lithium in this area.

STAMICO has been granted a prospecting license which is due for undertaking exploration in order to delineate specific targets with lithium bearing pegmatites.

GRAPHITE – 3 Prospecting licenses

Lindi – Southeastern Tanzania

The licenses are situated in south-eastern Tanzania, approximately 200km north of the Mtwara port and 460km south of Dar es Salaam, the Tanzania commercial city. The licenses are found within the high grade metamorphic rocks of the Neoproterozoic orogenic Mozambique belt, which is famous for presence of jumbo flakes graphite deposits.

STAMICO owns these licenses and has a plan to explore them. Envisaged activities include geological mapping, geophysical surveys and drilling.



REE – 1 Prospecting license

Songwe – Southwestern Tanzania

The license is found within the Ubendian Mesoproterozoic Belt. The REEs occur within the Panda hill carbonates which also contain niobium and phosphate mineralization.

Geological and geochemical data are available, however detailed geological investigation is required including drill works to establish available resources.

NICKEL – 1 Prospecting license

Kagera – North western Tanzania

The license is located 75km SW of the Kagera Port of the Lake Victoria. It occurs in Karagwe

district within the Mesoproterozoic Karagwe-Ankole Belt and along strike of Kabanga deposit, a largest undeveloped high-grade nickel sulphide occurrence in the world. Reconnaissance survey has been done and plans for detailed exploration are in place.

COBALT – 2 Prospecting licenses

Kagera – North western Tanzania

The licenses are located approximately 195km SW of the Kagera Port of the Lake Victoria in

Ngara district. They occur in within the Mesoproterozoic Karagwe-Ankole Belt along strike of

Kabanga deposit, which contain nickel, copper and cobalt mineralization. Extension of this belt is the host to the enormous cobalt mineralization in the Democratic Republic of Congo (DRC) and Rwanda. Plans for exploration are in place which include geological mapping, geochemical and geophysical surveys as well as drilling operations.



IRON ORE – 4 Prospecting licenses

Njombe – Southern Tanzania

The licenses are located in Ludewa district approximately 870km from Dar es Salaam. They are located within the Usagaran Paleoproterozoic belt close to the famous titaniferous Liganga- Mchuchuma Iron Ore. Locally, the geology indicate availability of multiple Titaniferous magnetic bodies associated with anorthositic gabbro



TIN – 1 Prospecting licenses

Karagwe – Western Tanzania

The license is located in Karagwe district approximately 80km SW of Bukoba. Regionally, the Karagwe-Ankolean Belt is host to tin mineralization. Tin is found in Cassiterite (SnO_2) in magmatic and hydrothermal environments associated with highly ractionated granites. A wide range of trace elements can also be accommodated by cassiterite.



B. PRECIOUS METAL

GOLD – 2 (Pida) Prospecting Licenses

Musoma – Northern Tanzania

Located approximately 200km north of Mwanza city. The licences are found within Neo-Archean Musoma-Mara greenstone belt. Regional structures (eg Suguti shear zone and N-S extending dykes) are known to control gold mineralization in the licenced area. High resolution geophysical maps as well as regional geological maps are available. Exploration program involving geological mapping, geochemical, ground geophysical survey and drilling is required.





GOLD – 3 (Geita, Busanda & Bukombe) Prospecting Licenses

Geita – Northern Tanzania

Located at Geita approximately 150km Southwest of Mwanza city. The licences are located in Sukumaland greenstone belt. They occur together with Geita gold mine, a largest mine in Tanzania owned by Anglo-American. High and low resolutions geophysical maps as well as regional geological maps are available. Detailed exploration program is required in these licences.

C. INDUSTRIAL MINERALS

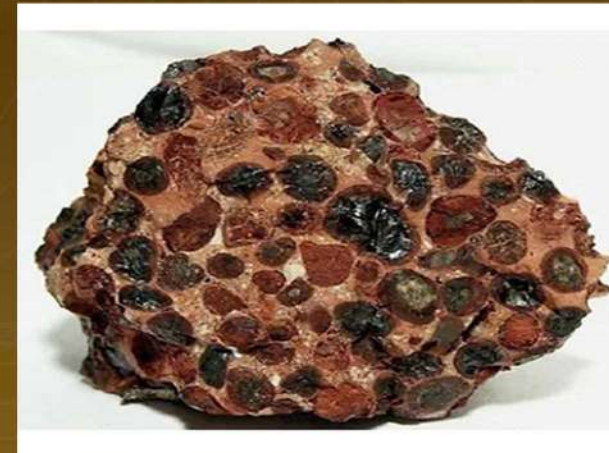
BAUXITE - 1 Prospecting License

Kilimanjaro-Northern Tanzania

The license is located in same district approximately 446km from Dar es salaam.

The parent rocks for the bauxite deposits along this area is mainly granulites and feldspathic gneisses of Neoproterozoic Mozambique belt.

STAMICO owns this license and has a plan to explore it through different geological activities such as geological mapping, geochemical survey, geophysical survey and drilling.



GYPSUM – 3 Prospecting Licenses

2 Lindi – Southeastern Tanzania and 1 Dodoma – Central Tanzania.

Two licenses are situated in south-eastern Tanzania, approximately 200km north of Mtwara port and 460km south of Dar es salaam, the Tanzania commercial city.

The two licenses are found within sandstone, clays, marls and limestone of the Neoproterozoic Mozambique belt while the other license is found within Dodoman-Isanga Group in granitic gneiss migmatite complex of Meso-Neoarchean Tanzanian craton.

Exploration through geological mapping, geochemical survey and drilling are required.





LIMESTONE – 10 Primary Mining Licenses

Tanga – Northeastern Tanzania

The licenses are located in Tanga region approximately 41.3km to Tanga port.

They are found in the layers of reef limestone and marls of the Jurassic age.

Main lithologies include detrital and reef limestone, sandstone and oolithic sediments.

These licences require exploration activities such as geological mapping, geochemical survey and drilling.



5.0 KIWIRA COAL MINE AND POWER PROJECT



Project name -	Kiwira Coal Mine and MW Power Project
Project Location -	Ileje District-Songwe Region, Southernland of Tanzania
Project Short Description -	Current Resources is more than 300 Million Tons of Coal Resources The Project is Segmented into Three <ol style="list-style-type: none">Coal Mining (Open pit mine and underground mine)Power Production (Construction of power plant)Transmission Line (Construction of 100KM power line to National grid at Mbeya)
Project Cost Estimates -	Total cost is estimated to be USD 480 Million
Available Information -	Feasibility study Report on 200MW of 2006 which need to be updated



6.0 RAFIKI BRIQUETTES TRADING

Product Name -

Rafiki Briquettes

Product Production

Tanzania.

Product Availability -

Available

Product Description -

Rafiki Briquette is smokeless Briquette made from coal dust mixed with other material with the following Characteristics:

(Easy to ignite, Odorlessness, Steady flame and No poisonous gas, it is clean and safe energy for cooking.

Product uses -

- i. Cooking
- ii. Barbeque
- iii. House Warm, rearing morden chicken and Curing agricultural products like Tobacco.

Product benefits -

- i. Provision of affordable and environmental friendly and cooking energy to the society
- Support global efforts on environmental conversation by providing alternative cooking energy which does not involve deforestation





7.0 DRILLING SERVICES OFFERED

STAMICO offers drilling services at competitive and affordable rates in; Drilling services: Ranges from Diamond Drilling (DD); Reverse Circulation (RC); Rotary Air Blast (RAB) and Air Core to various local and foreign mineral, oil and gas exploration and mining companies. Currently Corporate Drilling Consultancy clients includes: Geita Gold Mining Limited (GGM), Buckreef Gold Mine, Shanta Mine and Buhemba Gold Mine. STAMICO also offers geological consultancies for both mineral exploration and mining companies. v

Our Strength

- We own more than 14 brand new modern drilling rigs.
- STAMICO is 100% Operated under the Ministry of Minerals in the Government
- 50+ Years of Experience



8.0 COAL TRADING

Corporation own three coal licenses within Songwe region with over 300 Million tons. Currently Mining of coal is ongoing on at Kabulo for supply to cement factories manufacturer





AVAILABLE CRITICAL MINERALS LICENCES FOR JOINT VENTURE DEVELOPMENT



COBALT

Prospecting Licences are due for detailed exploration involving geological mapping, geochemical and geophysical survey.



IRON ORE

Historical information promises availability of enormous Iron resources. Licences require detailed geological exploration. The market for Iron and Steel is readily available both domestically and abroad.



LITHIUM

Prospecting Licence which is due for undertaking exploration in order to delineating potential areas hosting the lithium Mineral bearing pegmatites.



RARE EARTH ELEMENTS

Geological and geochemical data is available: detailed geological mapping is required as well as a few diamond drill holes.



GRAPHITE

Prospecting Licence which is due for undertaking exploration works on the area including geological mapping, geophysical surveys and drilling.



NICKEL

Availability of potential area. Detailed geological survey and drilling required.



TIN

A Licence contain geological data that prompt for detailed exploration involving geological mapping, geochemical and geophysical survey.